



**element control
systems**
commercial louvres
& solar shading

EASY COVER LOUVRE SYSTEM

commercial louvres | solar shading | design consultancy | sales and installation | natural ventilation

3/109 Ledger Road
Beverley SA 5009
enquires@ecsystems.com.au
phone 08 8243 0011
fax 08 8243 0711
www.ecsystems.com.au



APPLICATIONS

The ECS **Easy Cover** System is a primary stage louvre system produced from formed metal designed to aesthetically conceal wall-mounted intake and exhaust openings, associated with air conditioning and ventilation systems whilst providing high defence against wind and rain. Often used as a decorative cladding ,the

external appearance regardless whether it is used as a façade or as a weather proof inlet. The versatility enables economical use of both configurations where the requirement is for a continuous visual effect across a building façade in which air inlets or exhaust are incorporated.

AESTHETIC AND ARCHITECTURAL APPEARANCE

A choice of colorbond, aluminium or zincalume finish is available .Supported by structural concealed vertical mullions ,the Element Control Systems **Easy Cover** louvre may be installed as individual panels or an unbroken line with no

limits to height or widths with unique internal and external corners. In high applications when used as a screening product the effect can be increased by inverting the louvre. This will eliminate the possibility of see through.

ECONOMIC

Cost savings result from the ability to meet exact requirements with versatile standard components. The unique design and state of the art engineered machinery enable the louvre system to be

manufactured in lengths of up to 6me whilst not compromising quality or structural integrity. This benefit enable us to provided faster turn around times and cost reductions with on site installation.



OPTIONAL ACCESSORIES

Bird, vermin guards ,insect mesh, blanking panels, insulation panels and flashings, trims are available.

MATERIAL FINISHES

Colourbond - Zincalume Powder Coated.

PRINCIPLE OF OPERATION

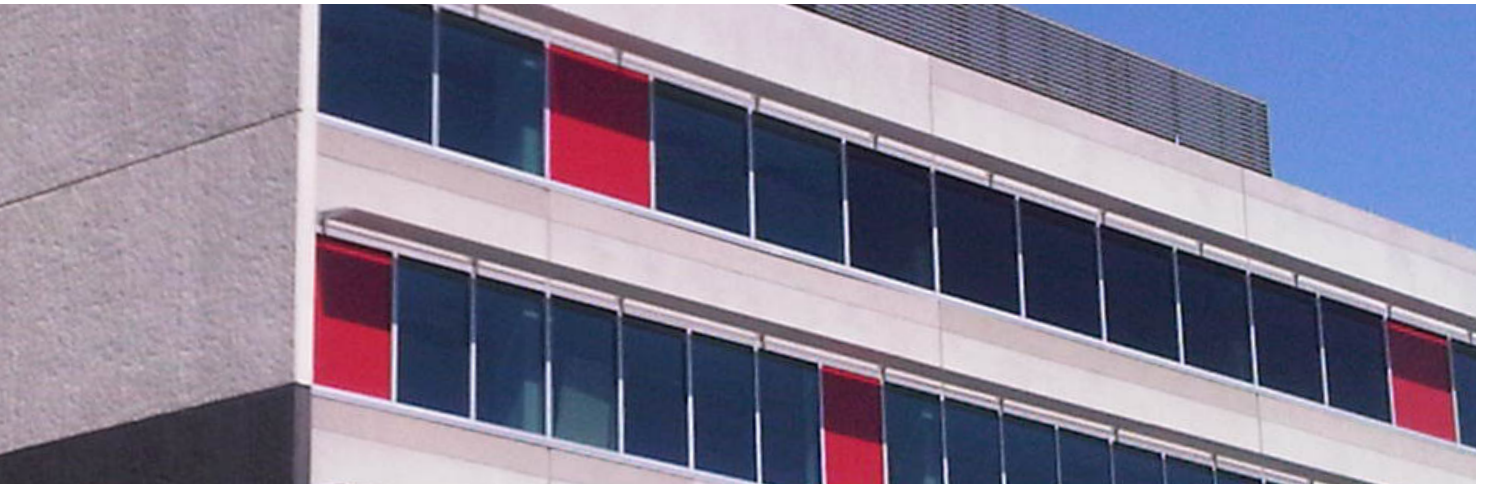
The **Easy Cover** louvre is a vertical positioned louvre ventilation system designed to meet harsh Australian conditions with respect of wind and rain defence. The louvre utilizes its special

shape and interlocking feature to achieve optimum airflow, and rain elimination whilst providing a very robust structural configuration to meet all wind load and external challenges.

PERFORMANCE DATA

The Easy Cover Louvre system is manufactured to meet the requirements of Australian Standards AS 4740 With respect to: Rain

Penetration Classification Aerodynamic area / Pressure drop Wind loading.



TYPICAL SPECIFICATION

Louvres shall be Element Control Systems Easy-Cover continuous horizontal system manufactured from , colorbond, aluminium , zincalume . Finish can also be applied via powder coating or

anodizing etc. External louvers shall be mounted and clipped on vertical secret mullions to provide an unbroken line over the entire length. The louvre system depth shall be 125mm.

WEIGHTS

Powder – coated / anodized.

PRIMARY STAGE

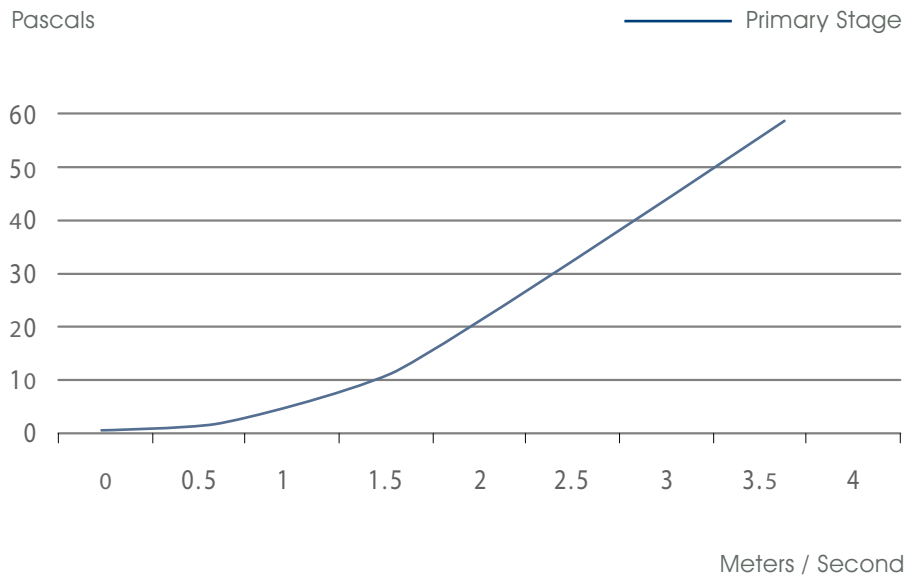
Aluminium	14 Kg
Colorbond	25 Kg

DUAL STAGE

Aluminium	27 Kg
Colorbond	48 Kg

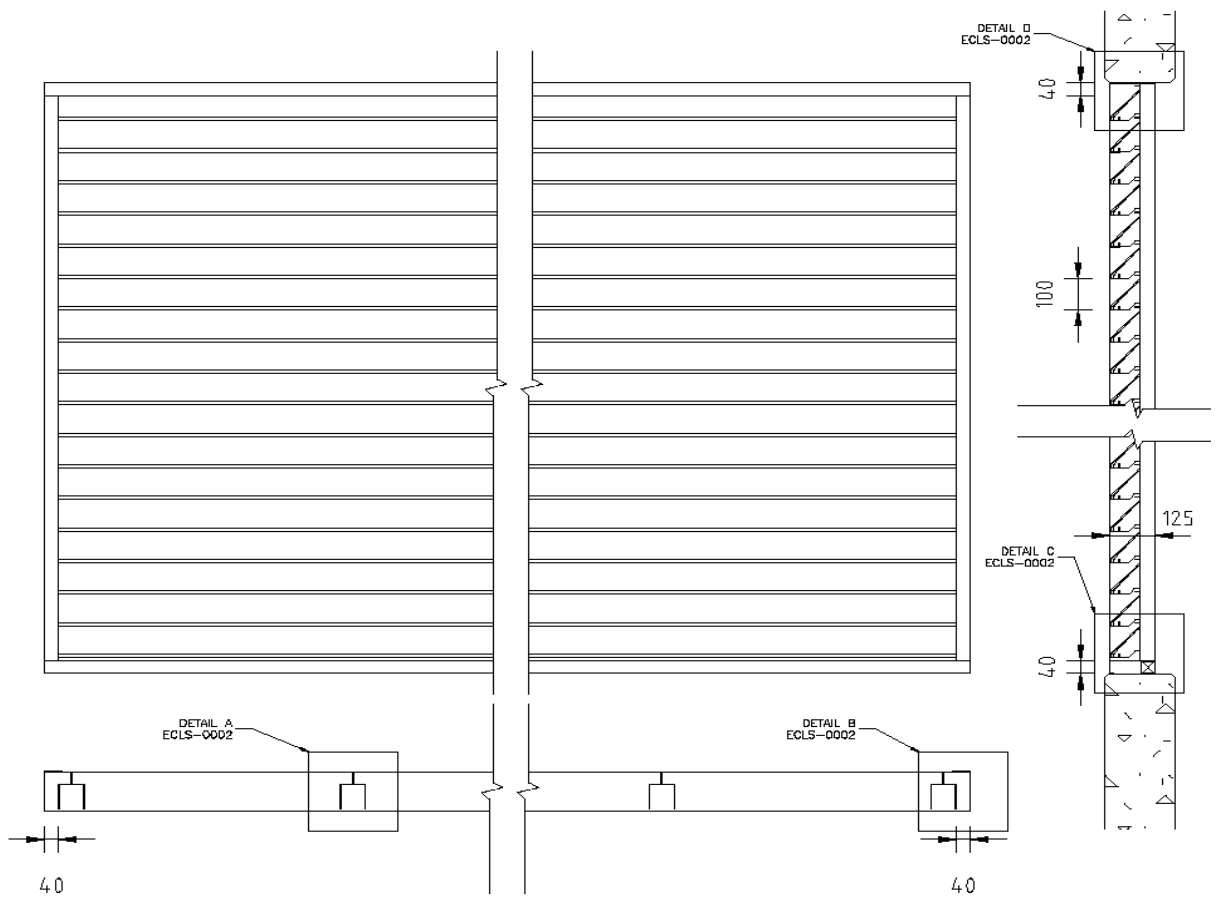


PRESSURE DROP/ VELOCITY



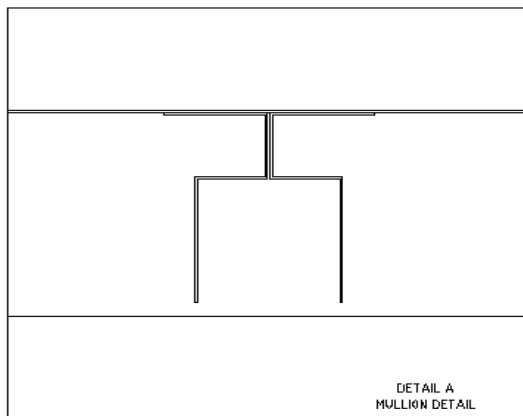


TYPICAL DETAILS

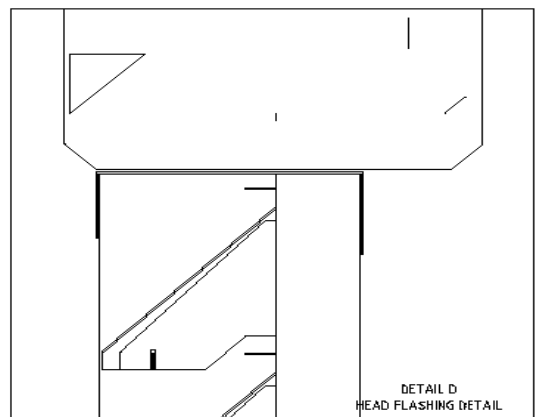
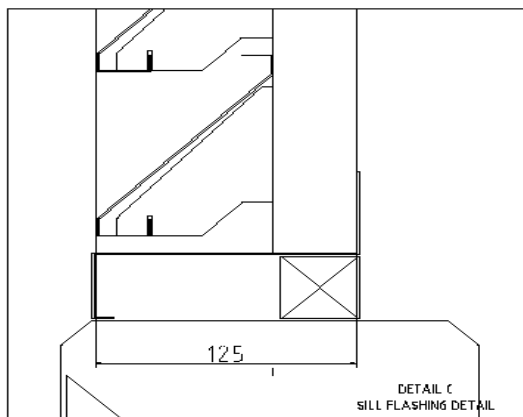
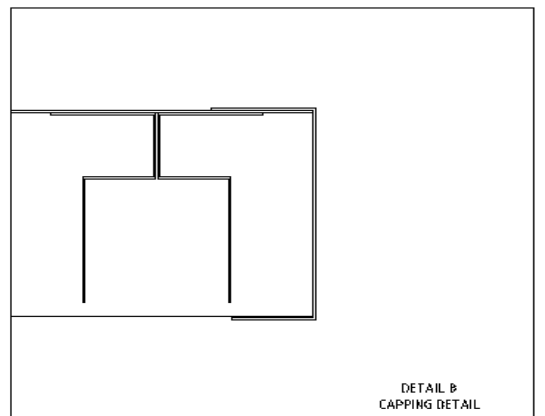




PLAN AND SECTION DETAILS



125





PLAN AND SECTION DETAILS

